



DOSATRON®

WATER POWERED DOSING TECHNOLOGY



D45RE8-IE - 20 GPM SERIAL # 07081104 AND UP INTERACTIVE SCHEMATICS

UNIT SPECIFICATIONS

- 1:33 - 1:12
- 7 - 70 PSI
- 1" NPT Connection

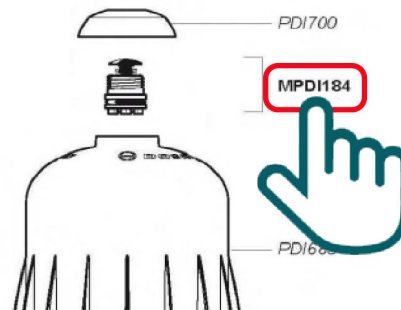
SUGGESTED INSTALLATION

- 200 mesh/80 micron water filter prior to the unit
- One-way check valve down-stream from the unit for water hammer protection

SUGGESTED MAINTENANCE

- Injection Seal Kit
Part #: **PJ150**
For yearly maintenance

DOCUMENT INSTRUCTIONS



- Click on a part #, to visit item page
- Click arrow back from item page, to return to this document



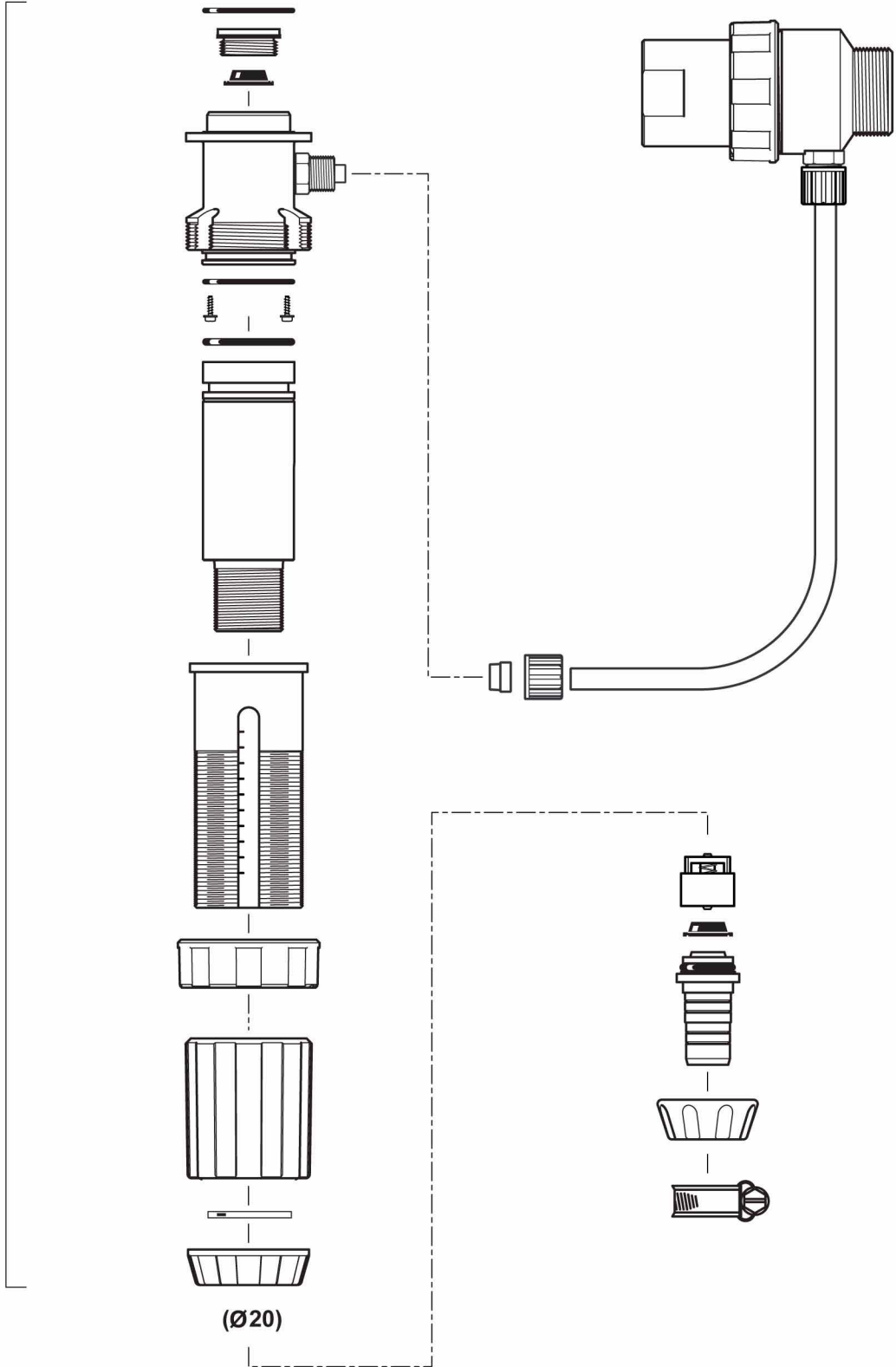
D45RE8-IE

For serial numbers
greater than 07081104

4.5 m³/h - 3 - 8%
20 GPM - 1:33 - 1:12.5
0.5 - 5 bar
7 - 70 psi

CD105

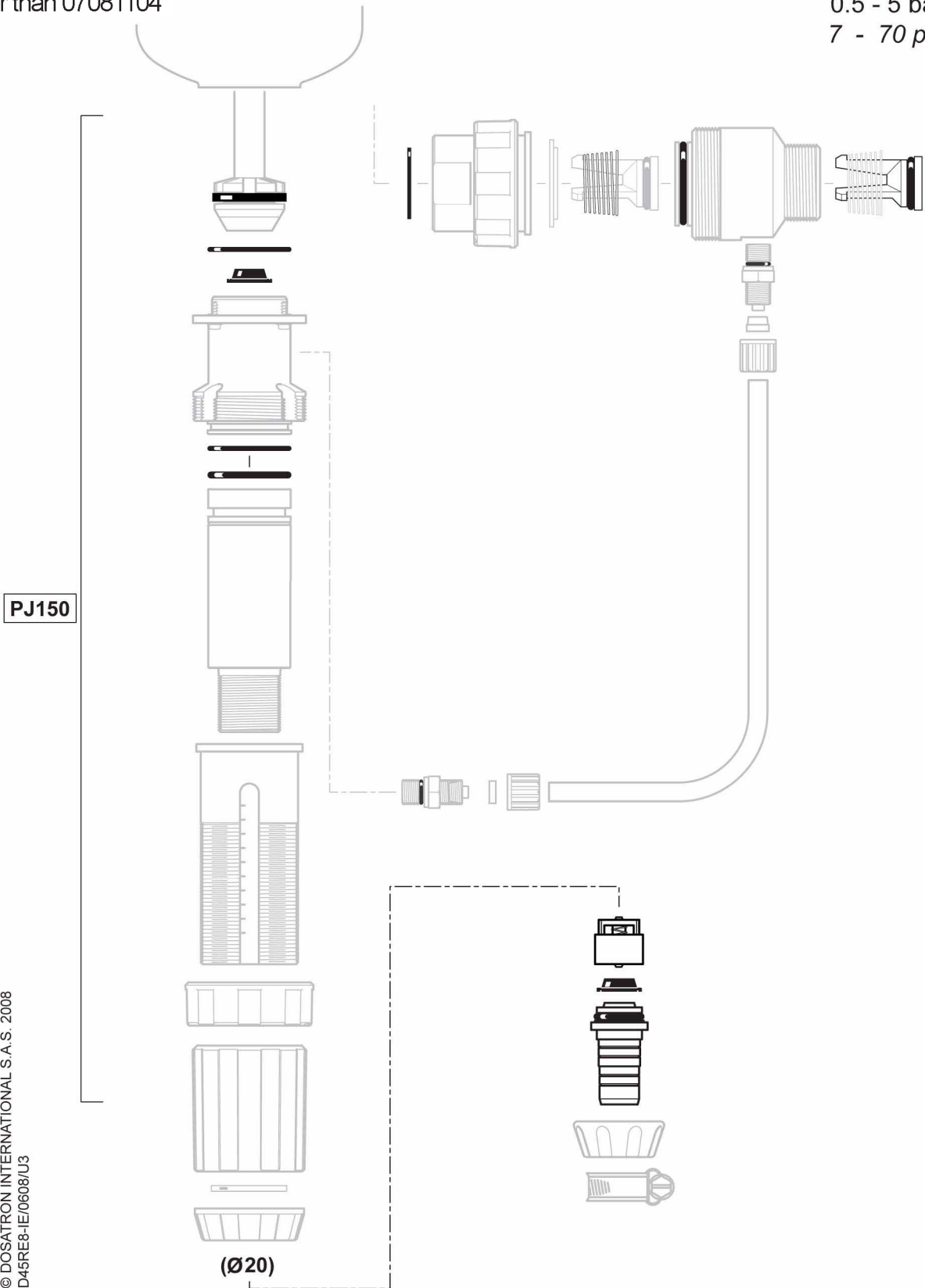
© DOSATRON INTERNATIONAL S.A.S. 2008
D45RE8-IE/0608/U2



D45RE8-IE

For serial numbers
greater than 07081104

4.5 m³/h - 3 - 8%
20 GPM - 1:33 - 1:12.5
0.5 - 5 bar
7 - 70 psi



© DOSATRON INTERNATIONAL S.A.S. 2008
D45RE8-IE/0608/U3