



DOSATRON®

WATER POWERED DOSING TECHNOLOGY

Proper protection, such as gloves, eyewear, and aprons, are recommended when disassembling a Dosatron.

D8RE3000 Troubleshooting



To troubleshoot your D8RE3000 injector you will need a strap wrench (Part #: TOOL01), needle nose pliers and a utility knife.

NOTE: It is best to perform this maintenance in a clean area or if your Dosatron unit is in-line, cover your concentrate tank so you won't lose any of the parts.

3 Key Areas in Troubleshooting

1. The Injector is clicking but not drawing the concentrate.

pages 2 - 6

2. The Injector is clicking, but is pushing water down into the concentrate tank.

pages 7 - 8

3. The Injector is not clicking or stalling at low flow.

pages 9 - 11



DOSATRON®

WATER POWERED DOSING TECHNOLOGY

Proper protection, such as gloves, eyewear, and aprons, are recommended when disassembling a Dosatron.

D8RE3000 Troubleshooting - Part 1

This D8RE3000 - 40 GPM Troubleshooting Part 1 will cover: The injector is clicking, but not drawing the concentrate.



If your Dosatron is clicking but not drawing the concentrate, it could be as simple as the strainer is plugged with debris.

Step 1: Take a look at the strainer. If it is clogged, just clean it and re-test your Dosatron unit.



Step 2: If there is no suction, unscrew and remove the hose nut.



Step 3: Slide the ferrule back and cut a half inch off the top of the hose. Reposition the ferrule to original position.



DOSATRON®

WATER POWERED DOSING TECHNOLOGY

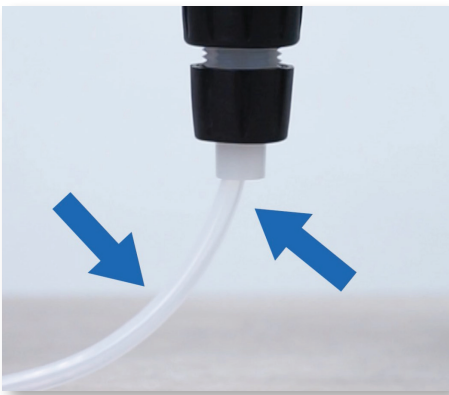
Proper protection, such as gloves, eyewear, and aprons, are recommended when disassembling a Dosatron.

D8RE3000 Troubleshooting - Part 1



Step 4: Insert the hose back into the barb and hand tighten the nut.

Note: If the hose (Part #: 4MM) is cracked, or looks really old, just replace it now.



Step 5: After you reinstall the suction hose, turn on the water. You should start to see the liquid begin moving up the hose.

If the liquid is not moving up the hose after a minute or so, just turn the water off.



Step 6: Press the air bleed button on the bell housing a few times to release the pressure.



DOSATRON®

WATER POWERED DOSING TECHNOLOGY

Proper protection, such as gloves, eyewear, and aprons, are recommended when disassembling a Dosatron.

D8RE3000 Troubleshooting - Part 1



Step 7: To continue, unscrew the suction hose nut once more and set the hose aside.



Step 8: Unscrew the injection stem nut and remove.



Step 9: Then, pull the injection stem straight out of the injector's body and set aside.



DOSATRON®

WATER POWERED DOSING TECHNOLOGY

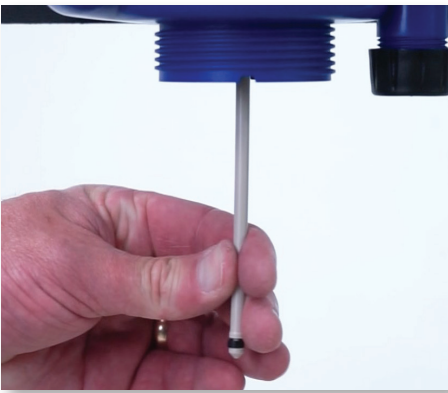
Proper protection, such as gloves, eyewear, and aprons, are recommended when disassembling a Dosatron.

D8RE3000 Troubleshooting - Part 1



Step 10: Take a close look at the plunger rod and seal. Make sure the rod is straight and that the seal is free of nicks, scratches, or wear.

NOTE: If the plunger or seal is damaged or you don't remember the last time you changed it, just replace the plunger assembly (Part #: 8PJ074) now.



Step 11: To remove the beige plunger, pull it down as far as it will go.



Step 12: Position the needle nose pliers near the top of the plunger and carefully twist it a quarter turn counter clockwise, as pictured, and disconnect.

To install the new plunger assembly (Part #: 8PJ074), use the needle nose pliers to align the top of the plunger with the retainer. Then twist it a quarter turn clockwise to lock.



DOSATRON®

WATER POWERED DOSING TECHNOLOGY

Proper protection, such as gloves, eyewear, and aprons, are recommended when disassembling a Dosatron.

D8RE3000 Troubleshooting - Part 1



Step 13: Grab the injection stem assembly and carefully slide it onto the plunger as pictured.



Step 14: Align the notches in the lower part of the blue body with the teeth on the top of the injection stem assembly. Slide the two parts together, and hand tighten the injection stem nut.



Step 15: Now, slide the hose into the barb and hand tighten the nut. Pull on the hose to make sure it's connected securely.

NOTE: If the hose comes off easily, you may need to cut another half inch off, reset the ferrule and reattach the nut.

Test the unit by slowly turning the water on. The unit should begin drawing the concentrate.



DOSATRON®

WATER POWERED DOSING TECHNOLOGY

Proper protection, such as gloves, eyewear, and aprons, are recommended when disassembling a Dosatron.

D8RE3000 Troubleshooting - Part 2

This D8RE3000 - 40 GPM Troubleshooting Part 2 will cover: The injector is clicking but is pushing water down into the concentrate tank.



If your Dosatron injector is pushing water down into the concentrate tank, it's time to investigate the check valve.

Step 1: Remove the hose nut and set it aside.



Step 2: Unscrew and remove the check valve nut.



Step 3: Grasp the white threaded barb and pull the check valve assembly straight out. It might come out in two pieces. Set the unit aside.

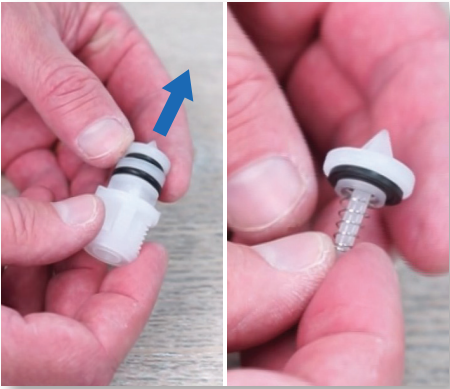


DOSATRON®

WATER POWERED DOSING TECHNOLOGY

Proper protection, such as gloves, eyewear, and aprons, are recommended when disassembling a Dosatron.

D8RE3000 Troubleshooting - Part 2



Step 4: To inspect the check valve, carefully lift the cone from the retainer and look at the bottom side of the cone. Then, carefully lift the retainer from the seal. You are checking to see if there is anything lodged or stuck.

NOTE: Do not try to remove the spring. If the spring is deformed or stretched, the complete assembly (Part #: PJD1140) must be replaced. If you see damage or don't remember the last time you changed these parts, replace them now.



Step 5: To reassemble, place the new check valve assembly into the top of the barb.



Reinstall the check valve and the check valve nut. Hand tighten.



Step 6: Now slide the hose into the barb and hand tighten the nut. Afterwards, pull on the hose to make sure it's connected securely.

NOTE: If the hose comes off easily, you may need to cut another half inch off, reset the ferrule and reattach the nut.

This should stop the water from going back into the concentrate tank.



DOSATRON®

WATER POWERED DOSING TECHNOLOGY

Proper protection, such as gloves, eyewear, and aprons, are recommended when disassembling a Dosatron.

D8RE3000 Troubleshooting - Part 3

This D8RE3000 - 40 GPM Troubleshooting Part 3 will cover: The injector is not clicking or is stalling at low flow.



If the Dosatron injector is not clicking or is stalling at low flow, we need to investigate the piston.

Step 1: Turn the water off and press the air bleed button a few times to release the pressure.



Step 2: Use the strap wrench (Part #: TOOL01) to loosen the bell housing. Unscrew, remove and set it aside.



Step 3: Grasp the white plastic bridge on top of the piston and pull it straight out.

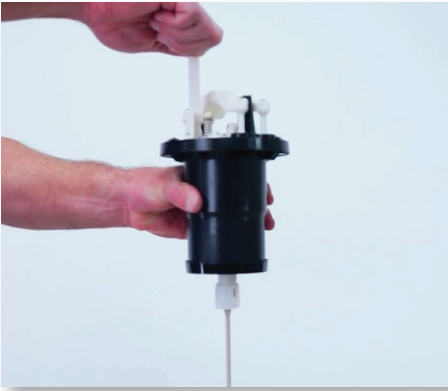


DOSATRON®

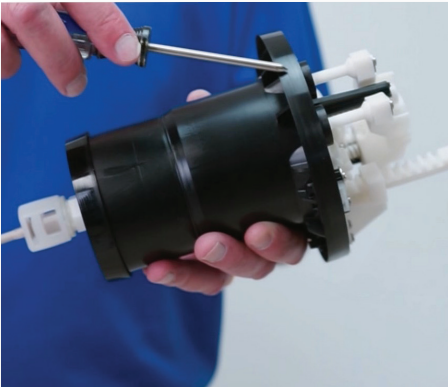
WATER POWERED DOSING TECHNOLOGY

Proper protection, such as gloves, eyewear, and aprons, are recommended when disassembling a Dosatron.

D8RE3000 Troubleshooting - Part 3



Step 4: Holding the piston, press the push rod up and down. It should click in both directions. If not, please give us a call for assistance or check out the D8 Piston Shell and Actuator Assembly Replacement Service Video.



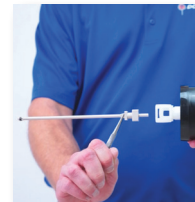
Step 5: Next, visually inspect the upper and lower flanges on the piston shell. If they are worn or have deep scratches, the piston shell (Part #: 8PC002) needs to be replaced.

Another way to check the flanges is by doing a **FIT TEST**:

To test the upper flange, invert the piston and insert it squarely halfway into the blue bell housing. It should stay in place.



To test the lower flange, use the needle nose pliers to twist the plunger counter clockwise and remove. Then, insert the piston squarely into the body about halfway - it should stay in place.



If either is loose, the piston shell needs to be replaced.

For assistance in replacing the piston shell, please contact Dosatron technical service at 1-800-523-8499 or check out the D8 Piston Shell and Actuator Assembly Replacement Service Video.

1-800-523-8499 • www.dosatronusa.com



DOSATRON®

WATER POWERED DOSING TECHNOLOGY

Proper protection, such as gloves, eyewear, and aprons, are recommended when disassembling a Dosatron.

D8RE3000 Troubleshooting - Part 3



Step 6: If you removed the plunger in the last step, reattach now using the needle nose pliers, by aligning the top of the plunger with the retainer. Twist the plunger clockwise to lock.



Step 7: Place the piston back into the body and reinstall the blue bell housing, hand tighten.

We hope this document has been helpful in troubleshooting your
Dosatron D8RE3000- 40 GPM Injector.

For more information, give us a call at **1-800-523-8499** or visit us online at **www.dosatronusa.com**.

To see our videos, check out our **YouTube** channel.

1-800-523-8499 • www.dosatronusa.com