



DOSATRON

D14MZ2 • 1.4 OPM • 1:500 • 1:50

Injection rate: 1:500 to 1:50 (0.18 to 2 %)	Dosificación: 0.8 a 2 % (1:500 a 1:50)
Operating flow: 10 psig to 14 GPM	Caudal de funcionamiento: 0.2 a 3 m³/h
Operating pressure: 4.3 to 89 PSI	Presión de funcionamiento: 0.2 a 6 bar
Contaminated additive injection: 0.011 Ft. water to 0.254 GPM	Caudal de inyección del producto: Concentrado: 0.002 a 60 l/h
Maximum temperature: 104°F	Temperatura máxima: 40°C

THE MANUFACTURER assumes no responsibility for damage or injury not conforming with the nature of the machine.

EL FABRICANTE no se responsabiliza en caso de accidente o daño no conforme con el manual de utilización.

Contacte a: DOSATRON INTERNATIONAL INC. 1-800-823-8488
 2985 BURNHILL BLVD. CALAMANCHETTE, PA. 15065 U.S.A.
 Tel: 1-727-443-5454 Fax: 1-727-447-2097
<http://www.dosatron.com>

WATER-POWERED CHEMICAL PROPORTIONERS FOR



Vehicle Wash



DOSATRON[®]

WATER POWERED DOSING TECHNOLOGY

Contents

1

**SET IT AND
FORGET IT**

2

**HERE'S
HOW IT
WORKS**

3

**HELPFUL
SUGGESTIONS**

4-5

**RECOMMENDED
PROPORTIONERS**

6

**PRE-
PLUMBED
PANEL
SYSTEMS**

7-8

ACCESSORIES

Set It and Forget It

There are no Venturi tips to deal with!

The frustration of being stuck between tips sizes and clogged tips is over. Dosatron has a large chemical well that adjusts to what YOU need and will never clog!

There is no need for electricity or air. Dosatron is powered by city or boosted water pressure. And, because it will work off city pressure, you can still wash cars even if your water booster pump fails!

The Dosatron mixed chemical discharge is plumbed directly to the arch or foamer. There is no longer a need for air diaphragm pumps that freeze up on your busiest days.

The metal free piston is corrosion resistant regardless of high, or low, pH. Its space saving design, and direct on demand mixing, eliminates mixed chemical tanks and mixed chemical pumps!

- Compact Size
- Water-powered
- NO venturi tips
- Simple to use
- Easy to adjust allowing for flexible dosage rates
- Easy to maintain saving you time and effort



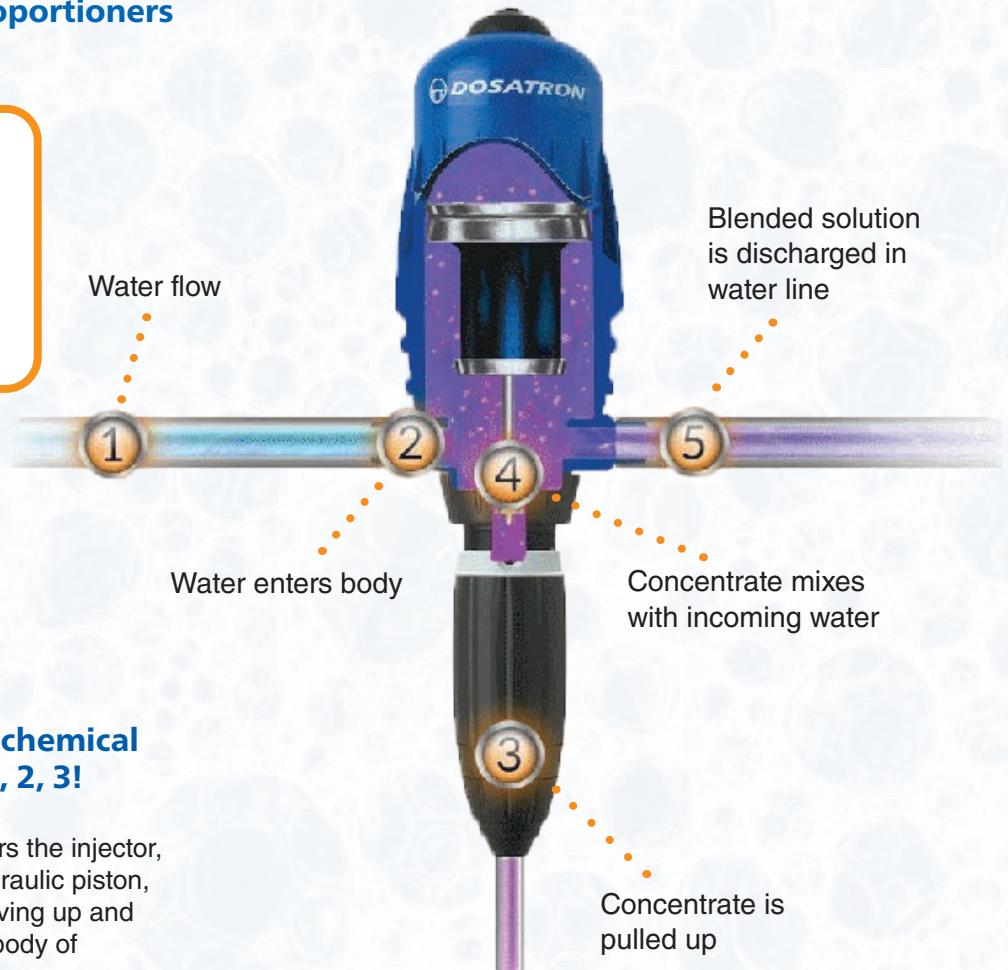
Here's How It Works

Dosatron chemical proportioners compensate for flow and pressure changes providing consistent, repeatable results and because they are water-powered there is no need for electricity.

Dosatrons are the perfect, chemical proportioners for vehicle wash applications. They are simple to use and easy to adjust, allowing for flexible dosage rates. And they are easy to maintain, saving you time and effort!

Dosatron Chemical Proportioners Accurately Inject:

- Presoaks
- Detergents
- Polishes/Waxes
- Bug Remover
- Drying Agents



Mixing the water and chemical mixture is as easy as 1, 2, 3!

- 1** When water enters the injector, it triggers the hydraulic piston, which begins moving up and down inside the body of the injector.
- 2** As it strokes, the Dosatron draws fluid up from the concentrate tank in an action similar to a hypodermic syringe.
- 3** The concentrate is then displaced into the mixing chamber, where it is mixed with the water flowing through the unit.

Scan the QR code to see how it works



Helpful Suggestions

Foaming Chemicals

Dosatron offers consistent dilution, regardless of variations in pressure and flow, but as the unregulated water pressure varies, the air to chemical pressure ratio at the foam generator will also vary, causing the foam “density” to change from wet to dry and back again.

When operating your Dosatron directly from city water pressure, installing the water pressure regulator and setting it 1 - 2 PSI below the lowest your water pressure drops will allow for an unvarying air-to-chemical pressure ratio at the foam generator.

This will also allow you to control the “density” of the foam and eliminate “spitting” at the arch by a simple adjustment of the air pressure to the foamer.

Decreasing Cost Per Car

Reduce your cost by reducing both your chemical and water usage.

With the ball valve installed on the water supply side of the Dosatron, open the ball valve wide open and observe the coverages of the mixed chemical on the car.

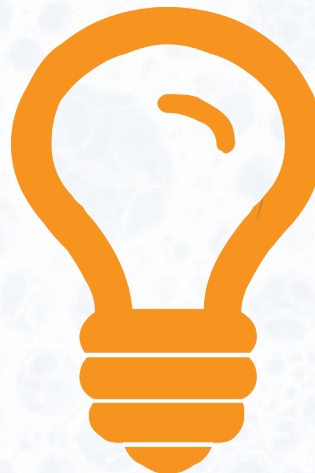
If the coverage is adequate, close the ball valve slightly and check the coverage again. Continue this procedure until you see sufficient coverage on the car without “flooding” the surface and using unnecessary water and chemical.

For example: if you are diluting drying agent through a Dosatron and you find the best “break” on the cars surface is at 400:1, lock the adjustment there.

If, with the ball valve wide open, the drying agent arch is flowing at 3 GPM and you are able to reduce the flow to 1.5 GPM by closing the ball valve and you are still getting sufficient coverage on the car, you have effectively reduced the amount of chemical and water used on each car by half!

Doing this gives you REAL water and chemical savings you can measure and see!

Remember, your Dosatron will provide consistently mixed chemical regardless of the flow.







Recommended Car Wash Proportioners

Dosatron's are a perfect fit for presoaks, detergents, and acidic products. The water-powered Dosatron provides accurate car wash chemical dispensing while cutting your cost-per-car.

Dosatron's volumetric proportioning dosing method automatically compensates for changes in water pressure or flow, producing a consistently-homogenous chemical mixture. This means that your chemical dilution rate stays the same regardless of pressure and flow changes, leading to a consistent clean you can count on.

Suggested Car Wash Units

DOSATRON CHEMICAL PROPORTIONERS				
MODEL	D14MZ2 VFDII	D14MZ5 AFDII	D14MZ10 AFDII	D14MZ3000 VFDII
FLOW RANGE	0.05 - 14 GPM	0.05 - 14 GPM	0.05 - 14 GPM	0.05 - 14 GPM
DILUTION RANGE	500:1 - 50:1	200:1 - 20:1	100:1 - 10:1	3000:1 - 333:1
PRESSURE RANGE	4.3 - 85 PSI	4.3 - 85 PSI	7 - 85 PSI	4.3 - 85 PSI
CONNECTIONS	3/4" NPT	3/4" NPT	3/4" NPT	3/4" NPT

Maximum temperature: 104°F


All units include: mounting bracket, suction hose, weighted strainer, and quick start guide.

Scan the QR
code for more
information on
Vehicle Wash.



Truck Wash

Suggested Large Vehicle or High Volume Units

DOSATRON CHEMICAL PROPORTIONERS			
MODEL	D40MZ3000VFII	D40MZ2VFII	D40MZ5AFII
FLOW RANGE	2.2 - 40 GPM	2.2 - 40 GPM	2.2 - 40 GPM
DILUTION RANGE	3000:1 - 500:1	500:1 - 50:1	100:1 - 20:1
PRESSURE RANGE	4.3 - 116 PSI	4.3 - 116 PSI	7.2 - 116 PSI
CONNECTIONS	1 1/2" NPT	1 1/2" NPT	1 1/2" NPT

Maximum temperature: 104°F

All units include: mounting bracket, suction hose, weighted strainer, and quick start guide.



Call or CHAT
for a quote

800-523-8499
www.dosatronusa.com

1-800-523-8499 • 1-727-443-5404

Pre-Plumbed Panel Systems

Make your installation easy with Dosatron's custom panel installations. Our pre-plumbed systems include all the necessary accessories mounted on either aluminum diamond plate or black polypropylene panels.

Triple Panel

- 3 Dosatron Proportioner units
- Filter
- Water and Air Solenoid Valves
- Pressure Regulators with Gauges



Part #: PSD5J138-138-138



Single Panel

- 1 Dosatron Proportioner unit
- Water and Air Solenoid Valves
- Pressure Regulator with Gauge
- Filter

Part #: PSD6A138



Low-Pressure Modular Self-Serve System

- 6 Bay with Air Version shown
- 1 Dosatron Proportioner unit
- Chemical & Air Solenoid Valve Manifolds
- Water & Air Pressure Regulators & Gauges
- Filter

Part #: Call 1-800-523-8499 for specific part #.

Accessories

Recommended accessories for your Dosatron Proportioner. Please note, for installation on all water systems, you must conform to all state, local, and federal laws concerning the use of chemical injection devices for back flow prevention.

Required Accessory

Filter - Part #: AKF5AP11T

T-Type, 200 Mesh/80 Micron filter, 3/4" FNPT, polypropylene, industrial grade. Includes a cleanable, permanent, stainless steel filter. No replacement cartridges necessary.



Optional Accessories



Check Valve - Part #: CV34-PH

3/4" check valve allows flow to go in one direction. Polypropylene hastelloy.

Solenoid Valve - Part #: SV034P-24-G

3/4" chemical resistant solenoid valve, molded single piece. Polypropylene. 24 V or 120 V.



Pressure Regulator - Part #: PR34-NPT

3/4" NPT low-lead brass body with durable stainless steel gauge and 1/8" brass threads.



Call or CHAT for a Custom Quote

800-523-8499

www.dosatronusa.com

1-800-523-8499 • 1-727-443-5404

Accessories

Pro HM Digital EC Meter - Part #: COM-100



Easily measures conductivity, TDS, and temperature of water.

EC Calibration Solution - Part #: CP-1000

Ready-to-use, individual liquid packets for optimized calibration.



Pro HM Digital pH Meter - Part #: PH-200



Easily measures pH and temperature of water.

pH Calibration Solution - Part #: PH-P7

Makes calibration easy with ready-to-use pH liquid packets.



Optional Accessories

Dosa-Lock Lockout Device - Part #: Dosa-Lock

Protects unauthorized access to your Dosatron settings. Includes lock and key set. Made of high impact strength polypropylene.



Note: Dosatron units sold separately.

pH Storage Solution - Part #: PH-STOR

Keeps probe balanced, contains fungicide and helps probe last longer.



Connect



1-800-523-8499

Give us a call and we will be glad to answer any of your questions or take your order.



CHAT

It's easy to CHAT at www.dosatronusa.com. Just enter your question and we will be glad to assist.

For Technical Advice Contact Our Vehicle Wash Specialists



Craig Peterson

847-612-5226
craig.peterson@dosatronusa.com



Jason Maddox

727-244-2041
jason.maddox@dosatronusa.com



Lori Donnell

727-543-5536
lori.donnell@dosatronusa.com

1-800-523-8499 • 1-727-443-5404



DOSATRON[®]

WATER POWERED DOSING TECHNOLOGY

2090 Sunnydale Blvd. • Clearwater, FL 33765 • 1-800-523-8499 • www.dosatronusa.com

2020-12 KK 2016-179-VW015